

THE EDUCATION COLLABORATIVE

2023 June Convening

Ethics and Leadership at Kepler

ETHICS AND LEADERSHIP AT KEPLER

Class

Dedicated Ethics Courses
Reflection and Discussions

Policies

Diversity and Inclusion
Code of Conduct
Academic Integrity

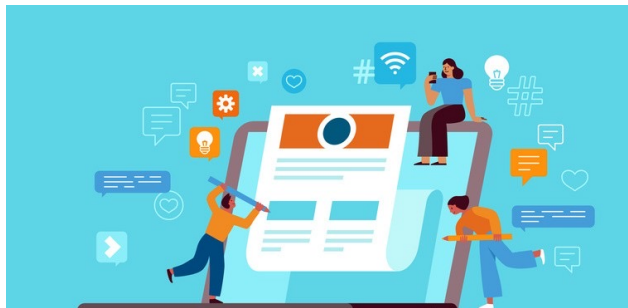
Extracurricular

Leadership Development
Programs/Clubs
Guest Speakers Series
Community Engagement



KEPLER LEADERSHIP CLUB

Founding Pillars



A student club built around a set of principles, values, & standards that guide and shape behavior, and conduct and personal growth.

To enable Kepler students to reach their greatest potential as Ethical Leaders with Exemplar Communication Skills and Empathy

Purpose



01

PROCESSES

Practicing leadership skills in nominating, reviewing, and selecting club's leadership, as well as for different projects based on demonstrated demonstrated commitment and exceptional performance.

02

MEETINGS

Presentations
Collaborative Projects
Peer-to-Peer Learning

03

ACTIVITIES

Service-learning projects
Community engagement initiatives, Workshops & seminars.

04

PHILOSOPHY


Foster a culture where ethical behavior is valued, leadership is nurtured, and members encouraged to make a positive difference in their communities.

KEPLER FUSION CENTER

A community-based hub bringing together students, staff and alumni to brainstorm, design, and practicalize various giving back giving back to the community initiatives.

Preparatory Training: Soft and Digital Skills for Pre-Tertiary Public Schools

PROJECT 1



Kepler College
VALUE - DRIVEN LEADERSHIP FELLOWSHIP
ETHICAL MINDS. ETHICAL LEADERS

Featured Schools
• GS Kagugu
• GS Kinjinya
May - June



PROJECT 2

Scaling up of student-led activities for community transformation through service and volunteerism

PROJECT 3



OUTCOME

- *Enhanced academic environment*
- *Hightened appreciation in Ethical Leadership.*
- *Increased student engagement*
- *Stronger alumni network*
- *Positive impact on society*
- *Elevated institutional reputation*

Thank You