



THE EDUCATION  
COLLABORATIVE

Annual  
Convening



# Work Integrated Learning- An Experiential Learning Strategy

JUNE 14, 2022.

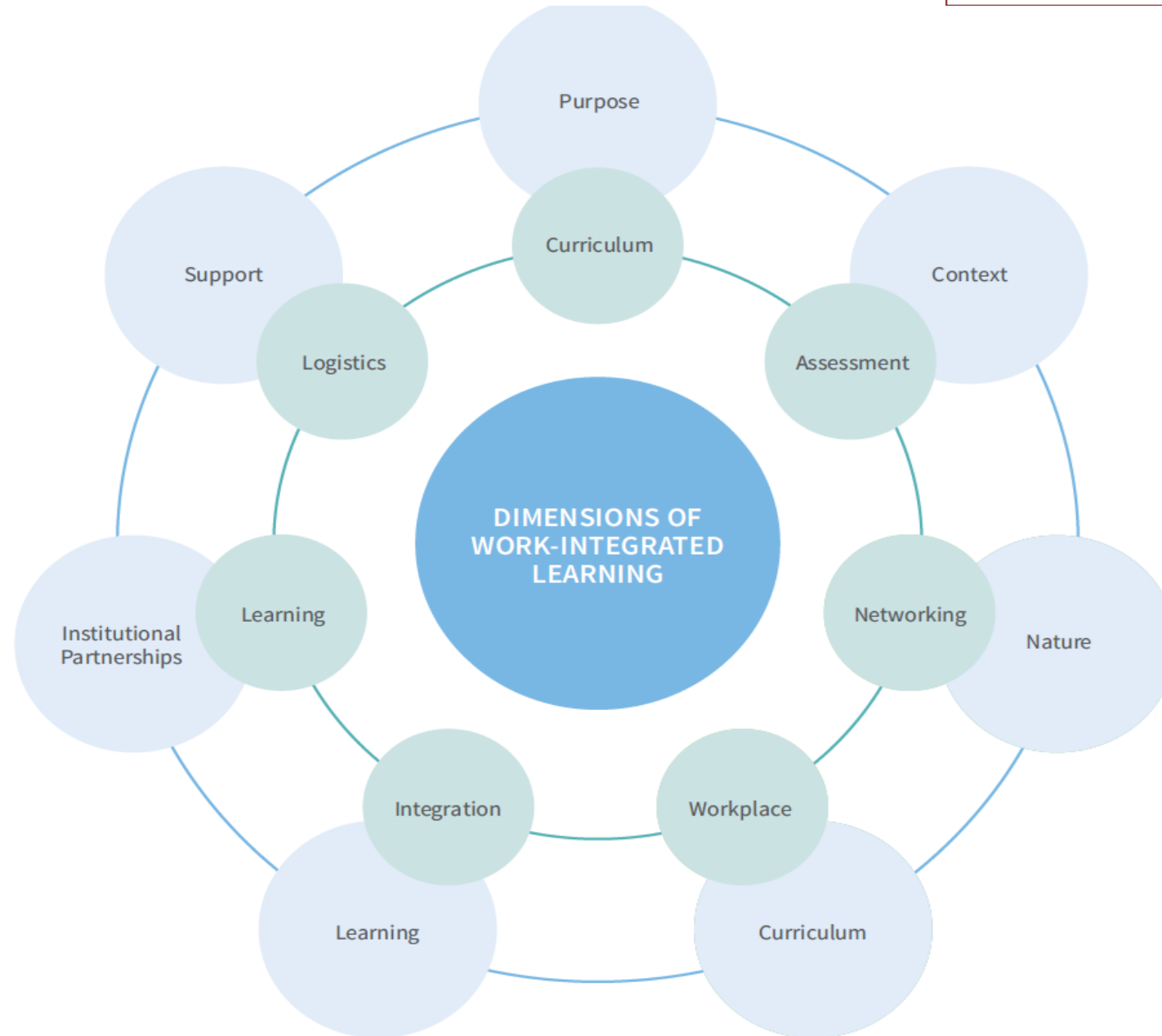
# Agenda

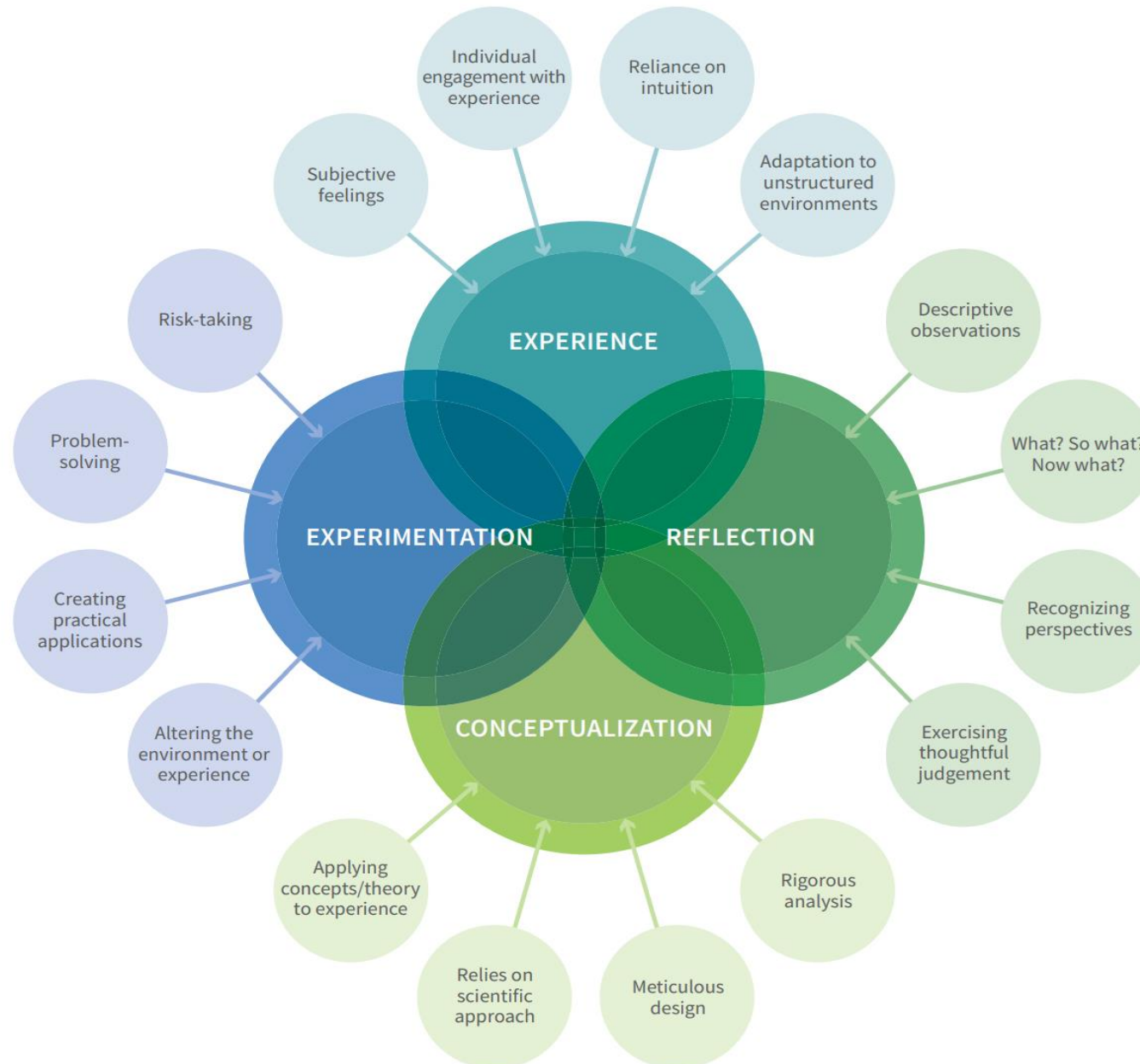
- Definition
- Dimensions
- Benefits
- Experiential Learning
- Vitae

## What is WIL?

**‘A Pedagogical practice whereby students come to learn  
from the integration of experiences in educational and  
workplace settings’**

**Billet 2009.**





# Types of Work Integrated Learning



## Internship

- Work experience under guidance of an experienced professional
- Deep learning and realistic preview of employment sector

## Placement

- All structured work experience
- Learning emphasis on career exploration and professional skill development

## Practicum

- Focus on developing professional capabilities
- Meeting professional requirements as defined by Accreditation Body

## Co-Op Education

- Guiding professional skill development
- Alternating between full time employment and full time study across an academic program

## Sandwich Course

- Supervised work position in student's future profession
- Occurs during time away from study

## Field Experience

- Work experience linked to program content
- Designed for preparation for professional practice

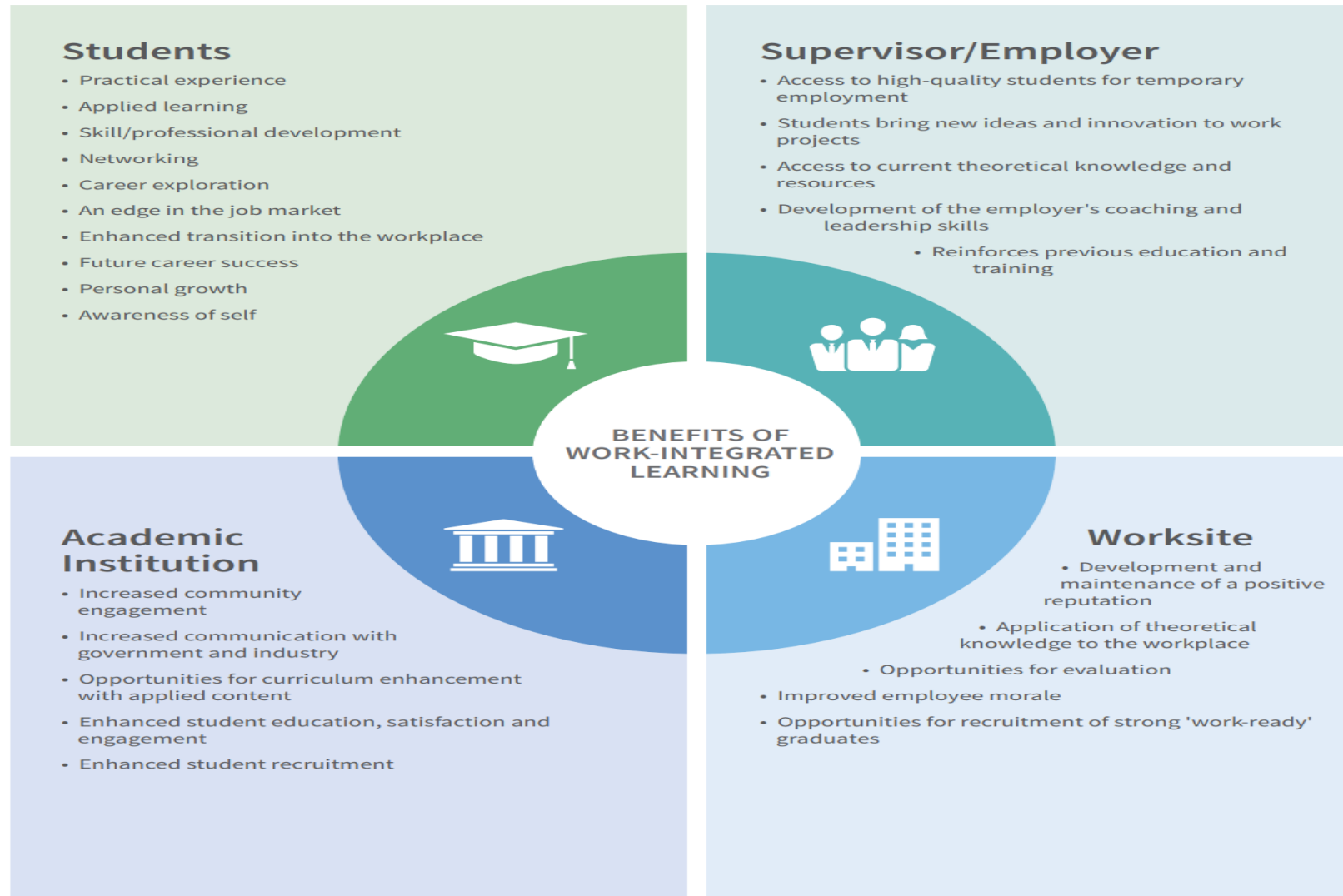
## Field Work

- Exposure to workplace through activities, site visits
- Experience used to enhance learning of academic content

## Work Study

- Concurrent work experience
- Linked to personal/professional development

# Benefits of Work Integrated Learning

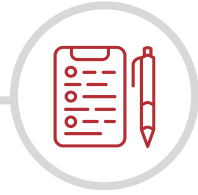


# Tenets of Experiential Learning

- **Learning is a Process**
  - Promoting previous learning
  - Viewed as ongoing
  - Ideas and techniques through WIL
- **Grounded in Experience**
  - Introduced at appropriate pace and progression
- **Mastery of all 4 modes**
  - Opportunities to experience, reflect, theorize and apply
- **Holistic Process of Adaptation**
  - Addressing students' feelings, perceptions in light of new experience, reflection & theory throughout WIL process
- **Learning occurs when a person interacts with environment**
  - Providing students experience in the real world
- **Knowledge is created through Learning**
  - Individualized learning
  - Make students responsible for own learning



# Case – Strathmore University



Vision – A leading  
Entrepreneurial  
university positively  
impacting society by  
doing excellent work

University Mission – All  
round quality education

Strategic pillars - 4

Collaboration

Evaluation



THE EDUCATION  
COLLABORATIVE

Annual  
Convening



# Thank You